

Dear Parent,

*At VTech® we know that a child's imagination is a truly wonderful thing and needs to be developed and nurtured. That's why we created the **Winnie the Pooh electronic learning series™** of interactive learning toys to stimulate children's imaginations, while also teaching vital preschool concepts such as the alphabet, numbers, shapes, colors and objects.*

*Through the use of unique technology and engaging child-directed role-play scenarios, **Winnie the Pooh** characters magically come to life to guide children through learning activities. These engaging characters foster children's critical reasoning skills, enhance their fine motor skills and engage them in exciting role-play activities for endless hours of learning fun.*

At VTech® we know that a child has the ability to do great things. That's why all of our electronic learning products are uniquely designed to develop a child's mind and allow them to learn to the best of their ability. We thank you for trusting VTech® with the important job of helping your child learn and grow!

Sincerely,

*Your Friends at **VTech®***

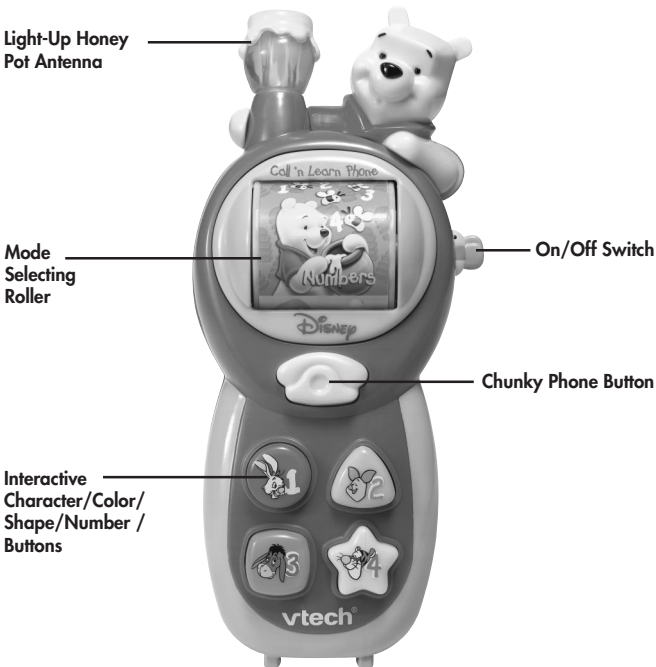
*To learn more about **Winnie the Pooh electronic learning series™** and other **VTech®** toys, visit*

www.vtech.com

INTRODUCTION

Thank you for purchasing the **VTech® Call 'n Learn Phone** learning toy!

The **VTech® Call 'n Learn Phone** is an interactive role-play phone that's full of fun! Bright colors and friendly Winnie the Pooh's voice will capture the attention of little ones while they learn numbers, colors and shapes. With cheerful melodies, friendly sing-along song and realistic phone sounds, learning has never been so much fun!



INCLUDED IN THIS PACKAGE

- One VTech® Call 'n Learn Phone learning toy
- One instruction manual

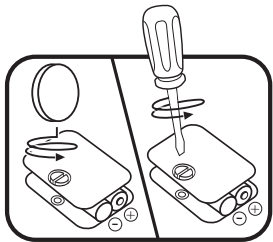
WARNING:

All packing materials such as tape, plastic sheets, wire ties and tags are not part of this toy, and should be discarded for your child's safety.

GETTING STARTED

BATTERY INSTALLATION

1. Make sure the unit is turned **OFF**.
2. Locate the battery cover on the back of the unit. Use a screwdriver to loosen the screw.
3. Install 2 new "AA" size (UM3/LR6) batteries following the diagram inside the battery box. (The use of new alkaline batteries is recommended for maximum performance.)
4. Replace the battery cover and tighten the screw to secure.



BATTERY NOTICE

- Install batteries correctly observing the polarity (+, -) signs to avoid leakage.
- Do not mix old and new batteries.
- Do not use batteries of different types.
- Remove batteries from the equipment when the unit will not be used for an extended period of time.
- Do not dispose of batteries in fire.

- Do not attempt to recharge ordinary batteries.
- The supply terminals are not to be short-circuited.
- Only batteries of the same and equivalent type as recommended are to be used.
- Do not mix alkaline, standard (carbon-zinc) or rechargeable (nickel-cadmium) batteries.

WE DO NOT RECOMMEND THE USE OF RECHARGEABLE BATTERIES.

PRODUCT FEATURES

ON/OFF BUTTON

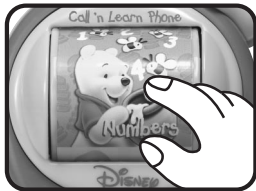
To turn the unit **ON**, slide the **ON/OFF SWITCH** to the **ON** (☀️) position. To turn the unit **OFF**, slide the switch to the **OFF** (●) position.

AUTOMATIC SHUT-OFF

To preserve battery life, the **VTech® Call 'n Learn Phone** will automatically power -down after approximately 20 seconds without input. The unit can be turned on again by pressing any button or rolling the roller.

MODES OF PLAY

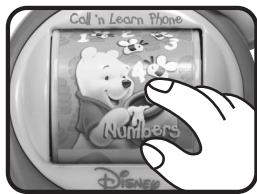
There are three modes of play: numbers, colors and shapes. To select a mode, move the **MODE SELECTING ROLLER** until it displays the mode that you would like to play. If the **MODE SELECTING ROLLER** lands between two modes, the buttons will give random sound effects as responses. To revert to normal play, continue moving the roller until a mode is selected.



ACTIVITIES

NUMBER MODE

Move the **MODE SELECTING ROLLER** to the **number mode**. You will hear a fun phrase related to the selected mode followed by a random melody. The light will flash with the sounds. Press the **character buttons** to hear the corresponding number of chimes followed by Pooh identifying the numbers.



SHAPE MODE

Move the **MODE SELECTING ROLLER** to the **shape mode**. You will hear a fun phrase related to the selected mode followed by a random melody. The light will flash with the sounds. Press the **character buttons** to hear a chime followed by Pooh identifying the shapes.



COLOR MODE

Move the **MODE SELECTING ROLLER** to the **color mode**. You will hear a fun phrase related to the selected mode followed by a random melody. The light will flash with the sounds. Press the **character buttons** to hear a chime followed by Pooh identifying the colors.



PHONE BUTTON

Press the **PHONE BUTTON** to hear the sung song. Press it again to hear a fun phrase. Press it another time and you will be asked to press a number/shape/color to call a friend. Just press a number/shape/color to answer and you will hear the character identified. If there is no input for a few seconds after the question, the button responses will revert back to the selected mode.



MELODY LIST

1. The Wheels on the Bus
2. Farmer in the Dell
3. Pop! Goes the Weasel
4. Humpty Dumpty

SUNG SONG LYRICS

Shall we talk to our friends today?

It would be so much fun.

To talk in such a friendly way.

Until the day is done.

CARE & MAINTENANCE

1. Keep the unit clean by wiping it with a slightly damp cloth.
2. Keep the unit out of direct sunlight and away from any direct heat source.
3. Remove the batteries when the unit is not in use for an extended period of time.

4. Do not drop the unit on hard surfaces and do not expose the unit to moisture or water.

TROUBLESHOOTING

If for some reason the program/activity stops working or malfunctions, please follow these steps:

1. Please turn the unit **OFF**.
2. Interrupt the power supply by removing the batteries.
3. Let the unit stand for a few minutes, then replace the batteries.
4. Turn the unit **ON**. The unit should now be ready to play again.
5. If the product still does not work, replace with a new set of batteries.

If the problem persists, please call our Consumer Services Department at 1-800-521-2010 in the U.S. or 1-877-352-8697 in Canada.

IMPORTANT NOTE:

Creating and developing **Winnie the Pooh** electronic learning products is accompanied by a responsibility that we at **VTech®** take very seriously. We make every effort to ensure the accuracy of the information, which forms the value of our products. However, errors sometimes can occur. It is important for you to know that we stand behind our products and encourage you to call our Consumer Services Department at 1-800-521-2010 in the U.S. or 1-877-352-8697 in Canada.

FCC NOTICE :

This equipment has been tested and found to comply with the limits for a Class B digital device, pursuant to Part 15 of the FCC Rules. These limits are designed to provide reasonable protection against harmful interference in a residential installation. This equipment generates, uses and can radiate radio frequency energy and, if not installed and used in accordance with the instructions, may cause harmful interference to radio communications. However, there is no guarantee that interference will not occur in a particular installation.

If this equipment does cause harmful interference to radio or television reception, which can be determined by turning the equipment off and on, the user is encouraged to try to correct the interference by one or more of the following measures:

- Reorient or relocate the receiving antenna.
- Increase the separation between the equipment and receiver.
- Connect the equipment into an outlet on a circuit different from that to which the receiver is connected.
- Consult the dealer or an experienced radio/TV technician for help.

THIS DEVICE COMPLIES WITH PART 15 OF THE FCC RULES. OPERATION IS SUBJECT TO THE FOLLOWING TWO CONDITIONS: (1) THIS DEVICE MAY NOT CAUSE HARMFUL INTERFERENCE, AND (2) THIS DEVICE MUST ACCEPT ANY INTERFERENCE RECEIVED, INCLUDING INTERFERENCE THAT MAY CAUSE UNDESIRE OPERATION.

THIS CLASS B DIGITAL APPARATUS COMPLIES WITH CANADIAN ICES-003.

CET APPAREIL NUMÉRIQUE DE LA CLASSE B EST CONFORME À LA NORME NMB-003 DU CANADA.

© 2004 VTech
Printed in China

91-02110-001-000 (英)